

Exafluence MindMaps: Making Learning Easy (Generative AI)

Malaya Rout
July 2024



Introduction

There was never a time when the speed, volume, format, and sources of information were as unstructured as they are now. Selectively assimilating information by choosing the best part of each source is of utmost importance. Given such a scenario, mind maps come to the rescue. At Exafluence, we have developed a habit of representing any topic of significance through a mind map. We share the mind maps within Exafluence for colleagues to refer to and learn from. We share them on public platforms, too. As an Exafluence philosophy, the intent has never been to hoard information to gain a competitive advantage. Instead, the intent has always been to spread the learning in the community of technologists. We are confident the dots will connect somewhere to create the beautiful painting the world wants.



What are the benefits of using a tool such as mind maps?

The following are a few apparent benefits of using a mind map, among many others.

- At the outset, a mind map structures the creator's thoughts. One would need a thorough grasp of the subject to create a good and complete mind map.
- It structures the thoughts of the reader as well.
- A mind map is a living document that can be easily maintained. Adding, deleting, and inserting nodes can be quickly done using mind-mapping software.

- A mind map is an efficient way to convey ideas when things have not taken shape concretely.
- It can be an excellent learning tool, especially for beginners.
- By looking at a mind map, one can determine the topics they don't know and must invest more time on.

Which mind map are we going to talk about today?

Generative AI is omnipresent. Generative AI is omniscient. It has captured everyone's imagination, and its impact is enormous. It impacts how we work, learn, and even think about things. We guess we have given away the answer.

I am curious to know more about it.

The Generative AI mind map consists of the following broad topics. We mention the salient properties under each LLM, such as the number of parameters used to train the model, creator company, modality, context window length, etc. We are confident that you won't feel bored going through the map. The "frequently used terms" branch of the map alone might take a couple of weeks if you are interested in Googling or LLM-ing their meanings and usage.

- GPT (Generative Pre-trained Transformer) series of models
- Claude
- Ernie
- Gemini
- Lambda
- Mistral
- PaLM
- StableLM
- Three ways of using LLMs
- Framework for Interacting with LLMs
- RAG (Retrieval Augmented Generation)
- Useful online tools
- Multi-agent frameworks
- Context Window
- Text-to-image generation models
- GitHub Copilot
- LLM managers
- Phi-X
- Vector Databases
- Frequently used terms
- Vicuna 33B
- Orca
- Llama
- Gemma
- Falcon 40B
- Cohere
- BERT



Could you please give us the link to the Generative AI mind map?

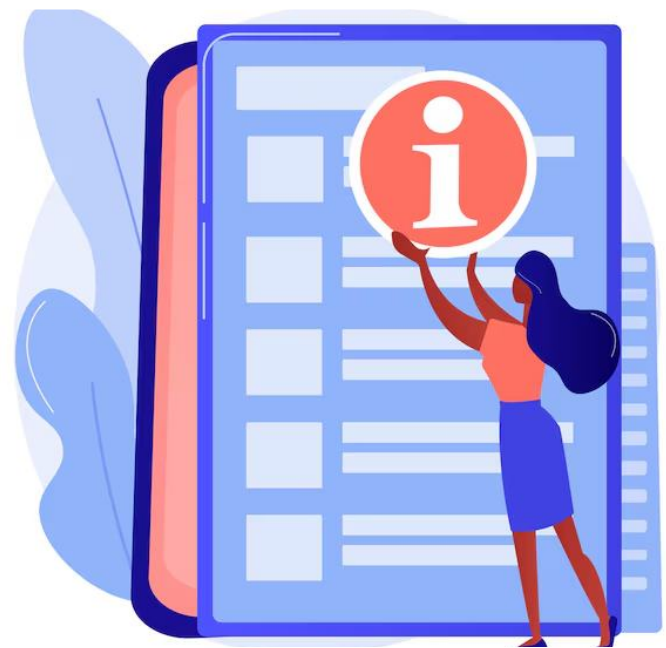
Here it is.

<https://www.mindomo.com/mindmap/exfmindmap-gen-ai-e07f0782a11644c793c5aa4218cd72a9>

The mind map has 572 nodes.

How fresh is the information contained in the mind map?

We update the mind map with new details that emerge in the industry and any new learning that the Exafluence team gains while working on a myriad of LLM-based applications. Such applications form part of our regular experimentation and contract-aligned exercises.



Conclusion

At Exafluence, this is our humble attempt to organize the chaotic and rapidly evolving world of Generative AI around us. Our colleagues have found this quite helpful. We hope you can use it to create a strong foundation in the subject and implement LLMs in real-life business solutions.

If you would like to learn more, write to us at marketing@exafluence.com

For interesting videos about our solutions subscribe to our YouTube channel-
<https://tinyurl.com/YouTubeExf>

For regular updates on our solutions follow us on LinkedIn
<https://tinyurl.com/LinkedInExf>